



Tillbridge Solar

Statement of Community Consultation

Published Thursday 25 May 2023

tillbridgesolar.com

@: info@tillbridgesolar.com T: 0800 046 9643

Table of Contents

- Section 1: Introduction..... 6**
 - 1.1 Purpose of the document..... 6
- Section 2: Nationally Significant infrastructure Projects 7**
- Section 3: About Tillbridge Solar 10**
 - 3.1 The Developer – Tillbridge Solar Limited 10
- Section 4: The Scheme 10**
 - 4.1 The proposed development 10
 - 4.2 Vision and objectives 14
 - 4.3 Environmental Impact Assessment 14
 - 4.4 Aims, objectives and values 15
 - 4.5 Ongoing engagement..... 17
 - 4.6 Collaboration workshops – July 2022..... 19
- Section 5: Statutory consultation (30 May 2023 to 11 July 2023)..... 20**
 - 5.1 Introduction..... 20
 - 5.2 What will we consult on? 20
 - 5.3 Who are we consulting?..... 21
 - 5.4 Consultation with under-represented or seldom heard groups..... 23
 - 5.5 How we will consult..... 24
 - 5.6 Promoting the consultation 30
 - 5.7 Wider engagement 34
 - 5.8 Engagement with seldom heard groups..... 35
 - 5.9 Information channels 35
- Section 6: Responding to the consultation..... 36**
 - 6.1 How to respond to the consultation..... 36
 - 6.2 How we will use consultation feedback 36
- Section 7: Further consultation 37**
- Section 8: Other solar DCO consultations in the area 37**
- Section 9: Contact details..... 38**



Appendix A – Consultee lists..... 39

Appendix B – Solar DCO projects..... 44

List of Tables:

Table 1.1: Statutory notice publication schedule.....	7
Table 4.1: Summary of scheme elements	13
Table 5.1: Statutory consultation methods for Tillbridge Solar.....	25
Table 5.2: Methods for promoting the statutory consultation for Tillbridge Solar.....	31
Table 5.3: Information channels for Tillbridge Solar	35

List of Figures:

Figure 2.1: Summary of the planning process for Tillbridge Solar.....	9
Figure 4.1: Location of the Scheme.....	11
Figure 4.2: Illustrative example of the Scheme	13
Figure 4.3: Indicative consultation timeline.....	16
Figure 5.1: Primary Consultation Zone for Tillbridge Solar	23

Section 1: Introduction

1.1 Purpose of the document

1.1.1 Tillbridge Solar Limited (“we” or “the Applicant”) is preparing a Development Consent Order (DCO) application under the Planning Act 2008 for a new solar energy and storage scheme located on land to south, east and south east of Gainsborough and to the north west of Lincoln (“the Application”).

1.1.2 This document is a Statement of Community Consultation (SoCC) which sets out how we intend to consult people ahead of our application for development consent for the Tillbridge Solar scheme (hereinafter referred to as the “Scheme”).

1.1.3 The Scheme is a Nationally Significant Infrastructure Project (NSIP) under sections 14(1)(a) and 15(2) of the Planning Act 2008 (the Act) and requires consent from the Secretary of State (SoS) for the Department for Energy Security and Net Zero via a DCO. Accordingly, this SoCC has been prepared pursuant to section 47(1) of the Act which requires applicants to 'prepare a statement setting out how the applicant proposes to consult about the proposed application with people living in the vicinity of the land' and Regulation 12 of the Infrastructure Planning (Environmental Impact Assessment) Regulations 2017 (the Regulations) which outlines the requirements for such statements in respect of environmental information.

1.1.4 This SoCC has been prepared with reference to guidance on pre-application consultation published by the Government and the Planning Inspectorate (PINS) and sets out the approach to consultation with the community in the vicinity of the Scheme.

1.1.5 In accordance with section 47 paragraphs (2) to (5) of the Act, in developing this SoCC, we consulted with and have had regard to comments from the following section 43(1) local planning authorities:

- West Lindsey District Council;
- Bassetlaw District Council;
- Lincolnshire County Council; and
- Nottinghamshire County Council.

1.1.6 In accordance with section 47, paragraph (6) of the Act, the Applicant will be publishing a notice in a newspaper circulating in the vicinity of the land, providing details of where the statement can be inspected.

1.1.7 It will also be shared with neighbouring local planning authorities upon publication. The publication schedule, including the statutory notices published in accordance with section 47 and section 48 of the Act, is provided in **Table 1.1**.

Table 1.1: Statutory notice publication schedule

Newspaper outlet	Notice	1st publication date	2nd publication date
Lincolnshire Echo	S47	Thursday 25 May 2023	N/A
Retford Times	S47	Thursday 25 May 2023	N/A
Gainsborough Standard	S47	Thursday 25 May 2023	N/A
The Guardian	S48	Thursday 25 May 2023	N/A
London Gazette	S48	Thursday 25 May 2023	N/A
Lincolnshire Echo	S48	Thursday 25 May 2023	Thursday 1 June 2023
Retford Times	S48	Thursday 25 May 2023	Thursday 1 June 2023
Gainsborough Standard	S48	Thursday 25 May 2023	Thursday 1 June 2023

1.1.8 The document outlines how people can learn more about the Scheme and engage with the process, prior to an application for development consent being submitted, provides a brief overview of what we are proposing to develop and what we will be consulting on, and the statutory pre-application consultation process.

1.1.9 This document also describes consultation on the Scheme in relation to other solar DCO consultations in the area.

1.1.10 Additionally, it sets out how we will have regard to consultation responses in finalising the proposals for the Scheme, which will be submitted as an application for development consent to the SoS.

Section 2: Nationally Significant infrastructure Projects

2.1.1 As the Scheme is an onshore generating station located in England with a proposed generation capacity of more than 50 megawatts (MW), the Scheme will be classified as an NSIP in accordance with sections 14(1)(a) and 15(2) of the Act. The consenting regime for NSIPs comes under the Act and requires the Applicant to apply for a DCO to develop the Scheme.

2.1.2 The Applicant intends to submit an application for a DCO under section 37 of the Act to PINS.

- 2.1.3 The Application would be examined by an examining authority appointed through PINS – the independent body responsible for examining NSIPs – who would make a recommendation on the application to the SoS. The SoS makes the final decision on a DCO application. This process is explained further in **Figure 2.1**.
- 2.1.4 Before submitting an application, the Act requires us to carry out consultation with people living in the vicinity of the land, prescribed consultation bodies, such as Natural England and relevant parish councils, relevant statutory undertakers, such as the Environment Agency and Local Authorities, and those with an interest in the land.
- 2.1.5 Early involvement of communities, local authorities and other stakeholders helps to ensure we identify valuable information about the potential effects of the Scheme and provides an opportunity for early feedback from stakeholders to help shape the Scheme's development.
- 2.1.6 Early involvement also ensures that potential mitigation measures can be considered and, where appropriate, built into our designs before an application for development consent is submitted.
- 2.1.7 The Planning Act 2008 process is shown in **Figure 2.1** and in more detail on the Planning Inspectorate's website: <https://infrastructure.planninginspectorate.gov.uk/application-process/the-process/>
- 2.1.8 PINS has also published a range of advice notes, which intend to inform applicants, consultees, the public and others about a range of process matters in relation to the Planning Act 2008 process. This includes advice note eight, which provides more detail on this process. All advice notes can be found on PINS' website: <https://infrastructure.planninginspectorate.gov.uk/legislation-and-advice/advice-notes/>

Figure 2.1: Summary of the planning process for Tillbridge Solar



Section 3: About Tillbridge Solar

3.1 The Developer – Tillbridge Solar Limited

3.1.1 Tillbridge Solar Limited is a joint venture between Tribus Clean Energy Ltd and Canadian Solar, who are both experienced developers of renewable energy projects. We are being supported by a team of technical specialists.

3.1.2 Founded in 2018, Tribus Clean Energy Ltd specialises in the development of renewable energy projects and has a UK solar PV development pipeline of over 1.5 gigawatts (GW) and a pipeline of over three gigawatt hours (GWh) of Battery and Energy Storage Systems (BESS).

3.1.3 Founded in 2001, Canadian Solar is a leading manufacturer of solar PV modules and provider of solar energy solutions and has a UK solar development pipeline of over 2GW, with over 4GWh of BESS.

Section 4: The Scheme

4.1 The proposed development

4.1.1 The Scheme is located approximately five kilometres (km) to the east of Gainsborough and approximately 13 km to the north of Lincoln.

4.1.2 The Scheme comprises two distinct sections, which are:

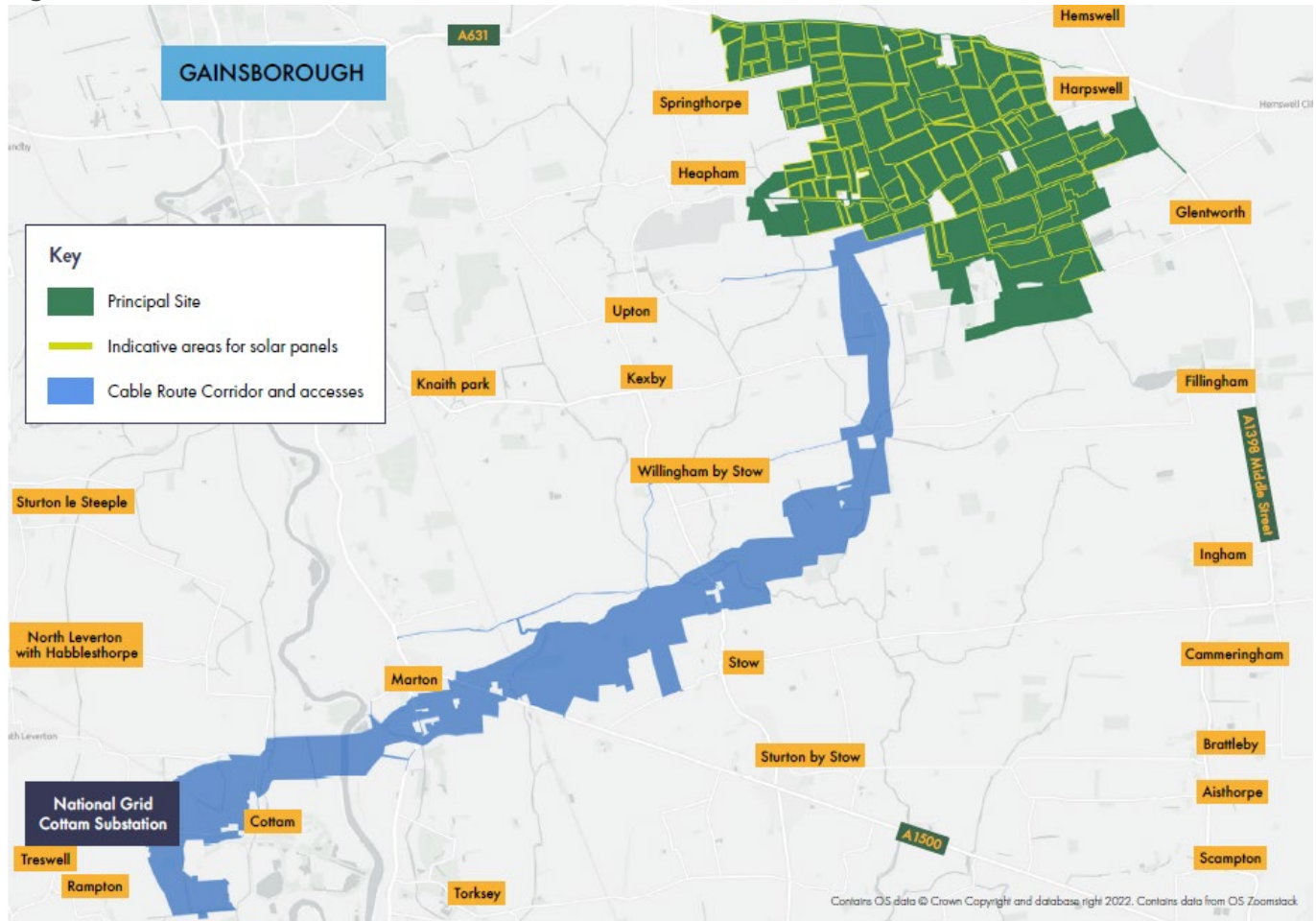
- 'the Principal Site', which is the location where ground mounted solar photovoltaic (PV) panels, electrical substations and energy storage facilities will be installed; and
- 'the Cable Route Corridor', which will comprise the underground electrical infrastructure required to connect the Principal Site to the national transmission system.

4.1.3 The Principal Site covers an area of approximately 1,400 hectares (ha) and is located entirely within the administrative area of West Lindsey District Council. The Principal Site comprises:

- Developable areas – where all solar PV panels and associated infrastructure would be located. This area sits on approximately 900 ha of predominantly agricultural land; and
- Non-developable areas – areas that are being considered for mitigation and enhancement, such as tree planting and habitat creation. This area amounts to approximately 500 hectares.

4.1.4 The location of the Scheme is shown in **Figure 4.1**.

Figure 4.1: Location of the Scheme



4.1.5 The electricity generated from the Scheme would then connect to National Grid’s Cottam substation in Nottinghamshire. The Applicant has secured a Bilateral Connection Agreement (BCA) with National Grid to allow 500MW of renewable energy to be transferred in to and out of their substation. We are now working to refine our proposals to ensure the Scheme can generate as much energy as possible in line with this agreement.

4.1.6 The underground Cable Route Corridor would be approximately 16 km in length, and crosses the administrative areas of West Lindsey District Council and Bassetlaw District Council.

4.1.7 The parameters of the Scheme within the Principal Site are at an early stage in the design process and will be refined as the Scheme progresses, taking into account environmental and technical factors, and consultation responses. An indicative site layout plan has been derived providing a snapshot in time showing the potential locations of the key components of the Scheme. This includes the location of the solar PV modules, the battery energy storage system, transformer stations, switchgear, two substations, control room and storage facilities and the access into and through the site for construction and maintenance.

4.1.8 The Scheme would consist of the following principal infrastructure:

- Solar PV panels (also known as solar modules);
- Solar stations (inverter, transformer and switchgear), including the necessary equipment to convert the DC electricity collected by the solar PV modules into AC, allowing electricity generated to be exported to the National Grid;
- Battery Energy Storage System (BESS) – providing peak generation and grid balancing services;
- Battery Direct Current (DC)/DC convertors;
- On-site cabling – required to connect the solar PV modules and BESS to inverters, and the inverters to the transformers on-site;
- On-site substations;
- Solar farm control centre;
- Equipment storage;
- Fencing, security and lighting;
- Site access and access tracks, including four points of access for the Principal Site off the main highway network and internal access tracks within the Principal Site;
- Surface water drainage; and Electricity connection to National Grid via cable route corridor. The Tillbridge circuit will be connected to an existing free bay at Cottam substation

4.1.9 An indicative example of the Scheme is shown in **Figure 4.2**. **Table 4.1** provides a summary of the scheme elements referred to in **Figure 4.2**.

Figure 4.2: Illustrative example of the Scheme



Table 4.1: Summary of scheme elements

The sun	Harnessing the sunlight as the earth’s primary source of energy
1. Solar panels	Convert the sun’s energy into DC electrical power.
2. BESS	Battery and Energy Storage will have a direct relationship with the solar panels and it will support the operation of this by storing electricity produced during times of peak capacity until it needs to be released.
3. Inverters, transformers and switchgear	Infrastructure is needed to convert power generated by the solar panels and step up the voltage within the Principal Site to allow onward transmission to the National Grid.
4. Substations	Consisting of equipment to facilitate the export/import of electricity from/to the Principal Site to/from the national grid.
5. Connection to the national grid	Electricity is exported from the on-site substation to the national grid via underground 400 kV cables. Cabling is also required within the Principal Site.

6. Output of power to the network	Power is transmitted to the network by the local network operator via the national grid.
7. Our homes	

4.2 Vision and objectives

4.2.1 Our vision for the Scheme is to deliver cleaner, greener, and lower cost energy, while also enhancing the local environment and ensuring we are a responsible developer.

4.2.2 Our objectives are to:

- The Scheme will seek to efficiently generate a large amount of renewable energy for supply to the National Electricity Transmission System. In doing so make a contribution to the decarbonisation of electricity generation and achieving net zero carbon emissions, in line with the government’s commitments.
- Provide equivalent energy needs for around 300,000 households with low-cost energy, generated in the UK at a time of great uncertainty within the energy market.
- The Scheme will seek to enhance existing ecology to achieve Biodiversity Net Gain and maximise opportunities to create new habitats for wildlife.
- Develop a Scheme in a responsible and considerate way.
- Provide opportunities for local communities and the local economy.
- Ensure the local landscape is central to the Scheme’s design.

4.3 Environmental Impact Assessment

4.3.1 The Scheme is an ‘environmental impact assessment (EIA) development’ under the Infrastructure Planning (Environmental Impact Assessment) Regulations 2017.

4.3.2 The application for development consent will therefore require an EIA to be carried out to ensure the likely significant effects of the Scheme are properly understood and that where available, appropriate mitigation measures are identified to control or reduce environmental effects.

4.3.3 An EIA Scoping Opinion was issued by PINS on 4 November 2022. This identifies the environmental issues and topics relevant to the Scheme, and which should be assessed as part of the EIA. The Scoping Opinion is available to view on the PINS website at: <https://infrastructure.planninginspectorate.gov.uk/projects/east-midlands/tillbridge-solar-project/?ipcsection=docs>

4.3.4 A Preliminary Environmental Information (PEI) Report will be produced and publicised and consulted upon as part of the statutory pre-application consultation obligations under s42 of The Planning Act 2008. A Non-Technical Summary (NTS) will also be available, which will summarise the contents of the PEI Report in a non-technical manner.

4.3.5 The PEI Report will build upon the findings from the Scoping Report (submitted in September 2022) and the feedback received through early engagement with stakeholders. It will provide preliminary environmental information on the potential environmental effects of the Scheme and any proposed mitigation to help the local community and consultation bodies to understand the likely significant environmental effects of the Scheme on the environment and inform responses regarding the proposals.

4.3.6 We will be inviting feedback and comments on the information presented in the PEI Report as part of the statutory consultation. Feedback received will be considered before the DCO application and EIA are finalised for submission.

4.3.7 All final environmental findings will be set out in an Environmental Statement (ES), which will form part of the DCO application. The ES will set out the assessment and conclusions of the EIA process. It will build on the content of the PEI Report and incorporate the responses from the statutory consultation, stakeholder engagement and the results of surveys undertaken. It will also describe any changes to the project and any mitigation measures that need to be implemented. Consultation and engagement approach.

4.4 Aims, objectives and values

4.4.1 The Applicant is committed to engaging and consulting with communities and stakeholders giving people the opportunity to provide feedback and insight at a formative stage ahead of more detailed design work being carried out.

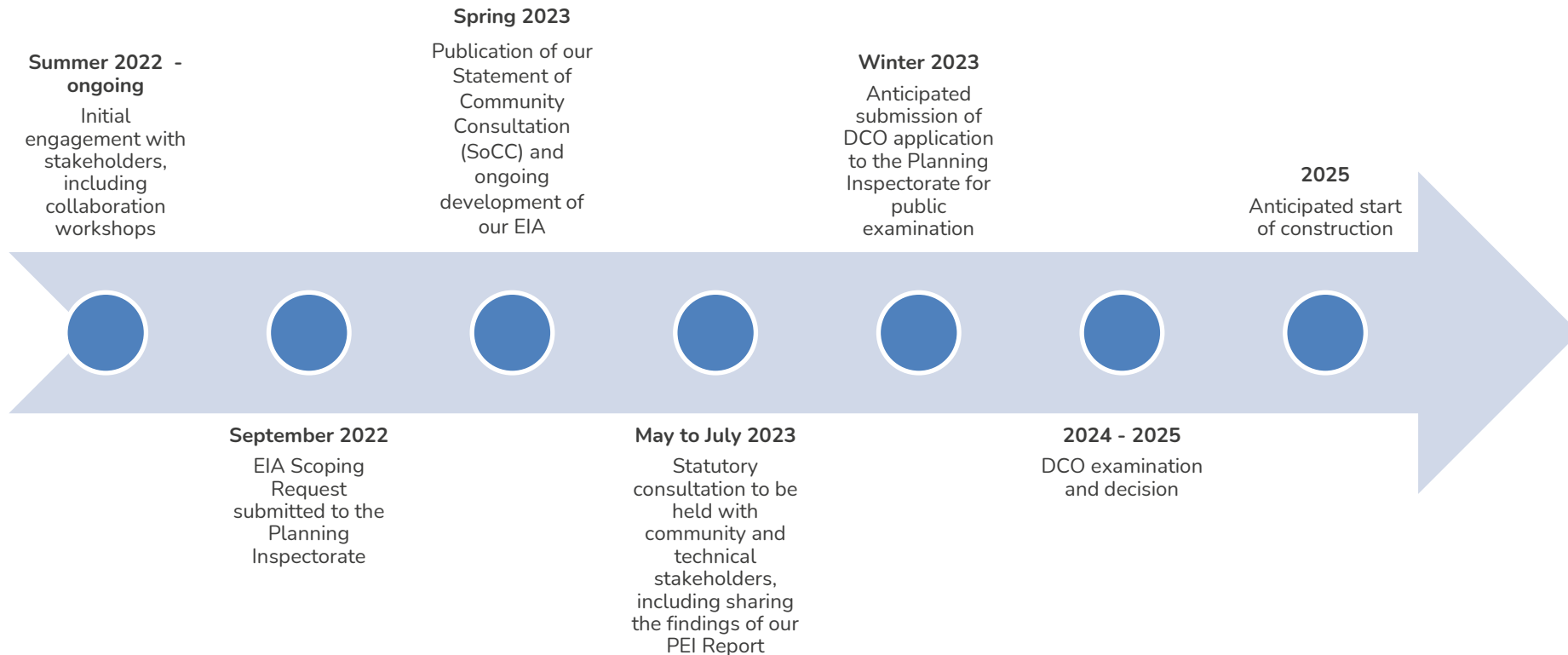
4.4.2 The Applicant is committed to being a good, long-term neighbour and wants to ensure that we can build a solar Scheme that benefits the local area.

4.4.3 We are undertaking an iterative consultation process for the Scheme. The comments we receive will help inform the final design of the Scheme. Our consultation consists of two broad phases:

- Ongoing engagement, held from summer 2022 to early-mid 2023; and
- Statutory consultation period lasting for 6 weeks, from 30 May 2023 to 11 July 2023.

4.4.4 This SoCC sets out how we will undertake the statutory consultation; however, a summary of the ongoing engagement and non-statutory consultation activities is provided below. The timeline for the scheme is shown in **Figure 4.3**.

Figure 4.3: Indicative consultation timeline*



*All future dates are indicative and remain subject to change.

4.5 Ongoing engagement

- 4.5.1 The initial stage of engagement began in summer 2022 and is ongoing until the start of the statutory consultation in May 2023, and beyond.
- 4.5.2 The primary aim of our initial engagement was to introduce our early-stage proposals for the Scheme, including the early environmental assessments and site selection work carried out to date.
- 4.5.3 During this initial stage of engagement, we engaged collaboratively with stakeholders to help understand key issues and potential constraints in the local area.
- 4.5.4 This ongoing period of non-statutory consultation provided the opportunity to engage with key stakeholders on a regular basis, including providing a series of Scheme updates prior to the statutory consultation in May 2023.
- 4.5.5 A summary of activities carried out during this stage of engagement is provided in **Table 4.1**, with more detail on specific consultation activities, including the collaboration workshops, also provided below.

Table 4.1: Ongoing non-statutory consultation activities for Tillbridge Solar

Consultation activity	Summary of activity
Early engagement with local planning authorities	Engagement with host local planning authorities started in June 2022 with initial briefings on the Scheme. We engaged with authorities on the approach to consultation and engagement and held specific briefings with their members to provide an overview of the early-stage proposals.
Site visits with landowners and near neighbours	<p>Engagement also included meeting with near neighbours in close proximity to the Principal Site where we introduced our early-stage plans and discussed the Scheme from a landscape and visual perspective.</p> <p>Near neighbours were defined as properties within or immediately adjacent to (less than 50 metres) to the ‘red line boundary’ (as was previously defined).</p> <p>Through a mix of pre-arranged meetings and a ‘door-knocking’ exercise, a total of 19 properties/sets of interested parties were met with</p>

	<p>across three separate site visits. This enabled local comments and issues to be fed into the Scheme design.</p> <p>A summary of the site visits, and relevant changes made to the Scheme, is provided in the Tillbridge Solar post-collaboration workshop report (September 2022), which can be found on the Scheme website (tillbridgesolar.com/documents-library).</p> <p>Site visits with near neighbours have taken place on a regular basis, which has helped to continually refine the Scheme design and inform the proposals for the statutory consultation.</p>
<p>Collaboration workshops</p>	<p>A series of collaboration workshops were held in July 2022 with the aim of identifying and understanding the views and opinions of stakeholders and communities who may be affected by the Scheme.</p> <p>A summary of this approach to engagement is provided in Section 4.6.</p>
<p>Ongoing engagement with consultees</p>	<p>Following the collaboration workshops, we have continued to engage with key stakeholders on the Scheme. Activities have included:</p> <ul style="list-style-type: none"> • Setting up regular meetings with local planning authorities • Circulating an initial community newsletter to local communities (defined by a primary consultation zone of approximately 5,000 addresses – as shown in Figure 4.1)

	<ul style="list-style-type: none"> • Offering and attending meetings with local stakeholders, including parish councils, local residents and landowners • Holding meetings with statutory/technical consultees to assist with the EIA process and design refinement.
--	--

4.6 Collaboration workshops – July 2022

4.6.1 As part of the early-stage engagement for the Scheme, we held a series of collaboration workshops to help understand key issues and potential constraints in the local area. This initial engagement has contributed towards the ongoing refinement of our plans for the Scheme and the information presented during our statutory consultation.

4.6.2 The workshops provided the opportunity to introduce the early-stage plans and explain more about the proposals and to create a platform for active participation in the design process.

4.6.3 Three collaboration workshops were held as follows:

- Wednesday 20 July 2022, from 1pm to 5pm, at Glentworth Village Hall, Stoney Lane, Glentworth, Lincolnshire, DN21 5DF
- Thursday 21 July 2022, from 2pm to 6pm, at Willingham Village Hall, High St, Willingham by Stow, Gainsborough, DN21 5JZ
- Friday 22 July 2022, from 10am to 2pm, at Sturton by Stow Village Hall, High St, Sturton by Stow, Lincoln, LN1 2AE

4.6.4 We invited key stakeholders to attend the collaboration workshops, who were selected as being representatives of persons with an interest in the Scheme, from a political, community and technical/environmental perspective. These stakeholders included:

- Relevant county, district, and ward councillors across the districts of West Lindsey and Bassetlaw and Counties of Lincolnshire and Nottinghamshire
- Wider council Members, Portfolio Holders, and technical/planning officers
- Representatives of the local community, including parish councils and local interest/ community groups
- Statutory consultees and wider environmental/ technical stakeholders

4.6.5 The approach to engagement during this phase of the Scheme, including specific groups and stakeholders to be invited to the workshops, was discussed with the relevant local planning authorities before the workshops were held.

4.6.6 A range of information was presented during the workshops in order to provide a more detailed understanding of the Scheme and the work carried out to date. This included:

- An introduction to Tillbridge Solar and the needs case for the Scheme, including the location and key elements of the proposals
- The story so far, including site suitability and environmental constraints and opportunities
- A discussion of specific environmental topics in relation to how the Scheme is defined going forwards

4.6.7 Attendees at the workshops were invited to provide feedback and comments throughout the session and discuss the proposals in more detail to help inform this. A full summary of the collaboration workshops can be found in the **Tillbridge Solar post-collaboration workshop report (September 2022)**, which can be found on the Scheme website (tillbridgesolar.com/documents-library). This report was uploaded to the website and issued to all stakeholders invited to the workshops.

Section 5: Statutory consultation (30 May 2023 to 11 July 2023)

5.1 Introduction

5.1.1 The statutory consultation will run for six weeks from **30 May 2023 until 11 July 2023**. All responses to the consultation must be received by **23:59** on **11 July 2023**.

5.1.2 Held in accordance with section 42 of the Act, this consultation will provide an opportunity for us update you on our proposals for the Scheme and provide a consultation response. More details on what we will be consulting on and how we propose to consult are listed below.

5.2 What will we consult on?

5.2.1 The aim of our pre-application consultation is to ensure that the community, landowners and tenants, stakeholders and technical consultees have the opportunity to understand and influence our proposals. The statutory consultation is an opportunity to present the more detailed proposals and key refinements made in response to ongoing design work and feedback during the previous stage of engagement.

5.2.2 We will be seeking feedback on all aspects of our plans for the Scheme. This includes inviting comments on issues related (but not limited to):

- The need for the Scheme.
- The Principal Site, including initial parameters associated with the Scheme and the Cable Route Corridor.
- Issues associated with the construction, operation and decommissioning of the Scheme.
- Preliminary information on environmental impacts as part of the published PEI Report. A NTS will accompany the PEI Report to summarise the contents of the PEI Report in a non-technical manner.
- Other plans, maps and documents to accompany the PEI Report.
- Anything else that you reasonably think we need to consider.

5.2.3 The full PEI Report, together with the NTS, will be made available electronically on the Scheme website. One copy will also be available for inspection only (and not to take away) at each of the local information points listed below. We will publicise as part of our statutory notices a service for requesting individual hard copies of technical documents, such as the PEI Report, and the process and charge for supplying these.

5.3 Who are we consulting?

5.3.1 Our consultation process is open to anyone who may be interested in, or in any way feels impacted by our proposals for the Scheme. We welcome all views and will take them into account before we submit our DCO application.

5.3.2 In accordance with section 42 of the Act, the Applicant will be consulting with a range of statutory and non-statutory consultees, such as Natural England, the Environment Agency and relevant local planning authorities.

5.3.3 We are seeking to consult with people who live in the vicinity of the Scheme, including people in areas where the Scheme may have a direct or indirect impact, either permanently or temporarily, as a result of construction, operation and maintenance or decommissioning of the Scheme.

5.3.4 Having considered these impacts, we have identified an appropriate primary consultation zone (PCZ) by initially extending a minimum distance of two kilometres from the boundary of the Principal Site Boundary – within which the solar PV panels, energy storage system, on-site substation and supporting infrastructure would be located. The PCZ also extends one kilometre from the edge of the cable route corridor for the grid connection.

5.3.5 The PCZ has also been extended in certain areas as considered proportionate. We have considered:

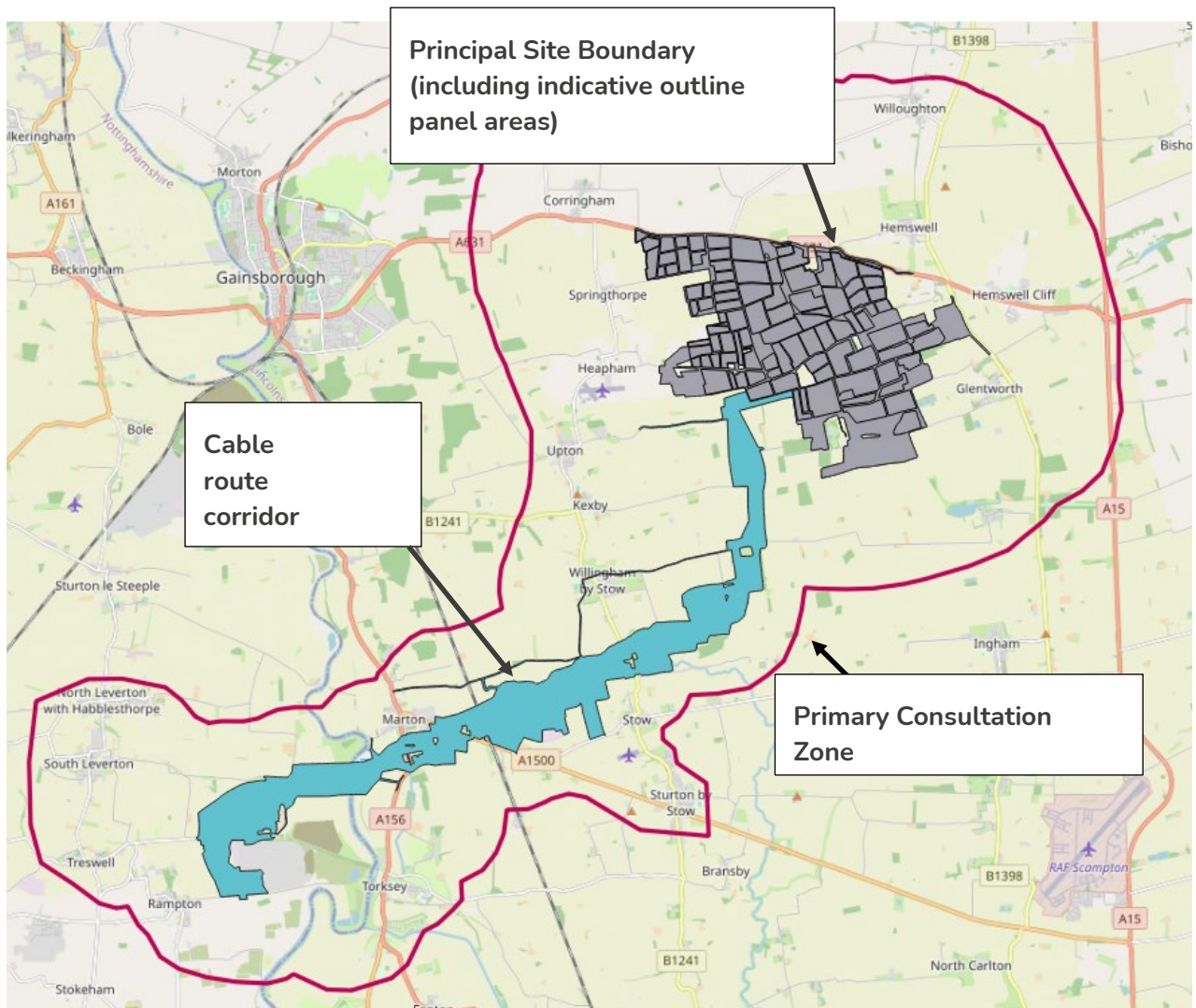
- Zone of theoretical visibility for the Scheme, which assesses areas in vicinity of the Scheme boundary which could experience a degree of visual impact;
- Existing natural and human geographic boundaries, such as main roads;
- Capturing entire communities, rather than excluding small numbers of properties;
- Coverage of the host district council wards and parishes; and
- Where we propose to undertake additional works to enable construction transport, equipment areas or road modifications.

5.3.6 The zone has been extended further where proportionate and reasonable based on existing boundaries in order to avoid inappropriate 'severance' of communities. The PCZ is shown in **Figure 5.1**.

5.3.7 All homes and businesses within the PCZ will directly receive consultation leaflets in the post at the start of the statutory consultation period. Consultation events will be held within the PCZ, where possible, and relevant groups and organisations such as parish councils and local interest groups will be notified of consultation opportunities.

5.3.8 We also recognise that people who live and work beyond the PCZ may also have an interest in our proposals and may wish to participate in the statutory consultation. We are committed to making sure that individuals and organisations are given the opportunity to participate and will attempt to raise awareness of the consultation using a number of methods such as advertising and direct communication with organisations located in the wider consultation zone. More details on these methods are outlined in **Section 5.5: How we will consult**.

Figure 5.1: Primary Consultation Zone for Tillbridge Solar



5.4 Consultation with under-represented or seldom heard groups

5.4.1 Our consultation has been developed to be accessible to all groups in the community, including ‘under-represented’ or ‘seldom heard’ groups and individuals who may be less likely to participate in or respond to traditional consultation techniques. These methods are outlined in **Section 5.5: How we will consult.**

5.4.2 These organisations will be contacted, by email and/or post, ahead of consultation to ensure that our approach best meets the needs of their members, including whether any consultation materials are required in a specific format. We will also contact these organisations and invite suggestions for any additional groups that should be contacted as part of the consultation.

5.4.3 We are hosting different formats of free-to-use communications channels to ensure our consultation is as accessible as possible, including include email, phone and post. We will also be using a combination of in-person and digital formats such as in-person events and webinars. We will also continue to notify them of consultation opportunities.

5.4.4 These groups and individuals that may find it harder to get involved in consultation and/or need additional support to access materials include, but are not limited to:

- The elderly
- People with visual impairments
- People with limited mobility
- Geographically isolated individuals or communities¹
- Young people

5.4.5 The list of seldom heard groups and non-statutory groups we will be contacting as part of this consultation is provided in [Appendix A – Consultee lists](#).

5.4.6 Whilst the completion of an Equality Impact Assessment (EqIA) is a duty placed on the public sector under section 149 of the Equality Act, we will produce an EqIA to demonstrate how the public sector equality duty has been considered and taken into account as part of the application to support the Examining Authority and Secretary of State in its decision-making.

5.5 How we will consult

5.5.1 During this statutory consultation, we will use a range of methods to ensure an inclusive, meaningful and open consultation. We will use a range of digital and non-digital methods of communication to ensure that our consultation can be accessed by all members of the community.

5.5.2 Our statutory consultation is planned to take place for six weeks from **30 May 2023 until 11 July 2023** and will exceed the statutory minimum period of 28 days as required by the Planning Act 2008.

5.5.3 A proposed schedule for all engagement methods, including activities and materials, is set out in **Table 5.1**.

¹ We will also contact relevant representatives/officers from local planning authorities and ask them to help engage with any travellers' communities.

Table 5.1: Statutory consultation methods for Tillbridge Solar

Consultation methods	
Method	Detail
Consultation events	<p>We will be holding six consultation events at locations across the PCZ. They will be advertised in consultation leaflets, in the local media and at local information points and through wider publicity for local community groups.</p> <p>All venues are located within the PCZ and have full disabled access, ensuring accessibility for all attendees.</p> <p>Events will be held on different days of the week with varied hours to accommodate different availability, including on weekdays and at weekends, including hours running into the evening. This account has been taken to ensure events are made available to a range of stakeholders, such as working families.</p> <p>The locations for the events are included below:</p> <ul style="list-style-type: none"> • Glentworth Village Hall, Stoney Lane, Glentworth, Lincolnshire, DN21 5DF – Wednesday 14 June; 2:30pm to 7pm • Willingham Village Hall, High St, Willingham by Stow, Gainsborough, DN21 5JZ – Saturday 17 June; 10am to 2pm • Sturton by Stow Village Hall, High St, Sturton by Stow, Lincoln, LN1 2AE – Thursday 22 June; 1:30pm to 5:30pm • Corringham Village Hall, 10 Middle St, Corringham, Gainsborough, DN21 5QR – Friday 30 June; 12pm to 4pm

	<ul style="list-style-type: none"> • Rampton Village Hall, Manor Grounds, Rampton, Retford, Nottinghamshire DN22 0JU – Saturday 1 July; 10am to 2pm • Hemswell and Harpswell Village Hall, Maypole Street, Hemswell, Lincolnshire, DN21 5UL – Thursday 6 July; 2:30pm to 6:30pm <p>Members of the Tillbridge Solar project team will be at these events to discuss the proposals in more detail and answer any questions. Hard copies of selected materials will also be available to view and take away, with all materials available in digital format via the Scheme website from 30 May 2023 (tillbridgesolar.com/documents-library).</p> <p>All venues have been selected based on their accessibility. Some events will be running later in the evenings to cater for working people who cannot attend during normal working hours.</p>
<p>Webinars</p>	<p>Webinars will be held for any member of the public to join via telephone or online. Two webinars will be held on:</p> <ul style="list-style-type: none"> • Wednesday 7 June - 6:30pm to 8pm • Monday 10 July - 6:30pm to 8pm <p>Attendees will be able to register for these online events on the project website (tillbridgesolar.com/consultation) or by emailing info@tillbridgesolar.com</p>
<p>Telephone call backs</p>	<p>Members of the public will be able to request a call back from a member of the project team (subject to availability) on 0800 046 9643 or info@tillbridgesolar.com. The phone line will be operational 9am–5:30pm weekdays (with an answerphone facility to take messages outside these hours). People can arrange a call back at a time suitable to them, including outside of office hours.</p>

	<p>This information will be advertised in the consultation leaflet and on the Scheme website.</p>
<p>Local information points</p>	<p>Hard copies of consultation leaflets and feedback questionnaires, will be available to collect from a number of local information points located in the vicinity of the Scheme, including libraries and council offices. These documents will be available to collect from the start of the consultation period.</p> <p>The locations are listed below.</p> <p><u>Lincolnshire</u></p> <ul style="list-style-type: none"> • West Lindsey County Council, Guildhall Marshall's Yard, Marshalls Yard, 13b Beaumont St, Gainsborough DN21 2NA Opening hours: Monday to Friday (9am to 5pm) • Lincoln Central Library, Free School Lane, Lincolnshire, LN2 1EZ. Opening hours: Monday to Wednesday and Friday (9am to 5pm), Thursday (9am to 6pm), and Saturday (9am to 4pm). • Gainsborough Library, Gainsborough Cobden St, Gainsborough DN21 2NG. Opening hours: Monday to Wednesday and Friday (9am to 5pm), Thursday (9am to 6pm), and Saturday (9am to 1pm) • Saxilby Library, St Andrews Centre, William St, Saxilby LN1 2LP. Opening hours: Tuesday (10:30am to 3:30pm), Wednesday (10:30am to 4pm), and Friday (10:30am to 1pm). <p><u>Nottinghamshire</u></p> <ul style="list-style-type: none"> • Retford Library, Churchgate, Retford, Nottinghamshire DN22 6PE. Opening hours: Monday to Friday (9am to 6pm) and Saturday (9am to 3:30pm)

	<p>A full copy of the PEI Report and the non-technical summary and the more detailed project information booklet will be available for inspection only (and not to take away) at the local information points listed above and via the project website (tillbridgesolar.com/documents-library), with USBs also available free of charge, by request. USBs will be limited to one per household.</p> <p>A copy of this SoCC will also be able to inspect at these locations.</p> <p>We will check, by telephone, that consultation documentation remains at the information points throughout the consultation period.</p>
Scheme website	<p>A dedicated Scheme website (tillbridgesolar.com) is live for you to find out more information and provide your feedback.</p> <p>All consultation documents will be presented digitally and available for download, free of charge, from a specific consultation section on the website. Information will be consistent with materials available at the consultation events.</p> <p>The latest plans, including the Principal Site boundary and Cable Route Corridor, will be presented on an Interactive Map, which can be accessed through the Scheme website.</p>
Consultation materials	
Material	Detail
Project information booklet	A project information booklet will be published at the start of the consultation, providing a summary of the

	<p>proposals we are consulting on, details of how people can take part, how feedback will be considered and how their feedback will be used to influence and shape the proposals. The booklet will also include the indicative site layout plan (of the Principal Site).</p>
Statutory consultation leaflet	<p>Consultation leaflets will be prepared to provide a high-level overview of the Scheme, the consultation and how people can get involved. The leaflet will indicate where the relevant Scheme information can be found and publicise the consultation events, including locations, dates and timings.</p>
Feedback questionnaire	<p>A feedback questionnaire will be prepared to allow people to provide feedback on the proposals. The questionnaire will ask people to provide feedback on all aspects of the Scheme, including particular issues we are seeking comment.</p> <p>The questionnaire can be completed online or downloaded if required and is also available in hard copy.</p>
Frequently Asked Questions (FAQs)	<p>A FAQs document will be available on the Scheme website at the start of the consultation period.</p>
Preliminary Environmental Informational (PEI) Report and Non-technical Summary (NTS)	<p>The PEI Report will contain a description of the Scheme, a preliminary assessment of the potentially significant environmental effects and the initial strategies to mitigate adverse effects. The PEI Report will be based on information available at that time, but the assessments will be developed once further detail is available and reported within an Environmental Statement submitted with the DCO application.</p> <p>An NTS of the PEI Report can also be downloaded from the Scheme website and will be available in printed format free of charge on request from the community relations team and at the consultation events.</p>

<p>Technical Scheme documentation, including maps and plans of the Scheme</p>	<p>We will be producing plans for the Scheme, which will be available to view at the consultation events and on the Scheme website.</p> <p>Plans showing the location and aspects of the Scheme will be available at all times during and following the consultation period.</p>
<p>Materials in alternative formats</p>	<p>Upon request, all documents will be available in alternative accessible formats, such as braille, speaking text and alternative languages. All requests should be made to the community relations team by email (info@tillbridgesolar.com) or phone (0800 046 9643), or can be made to the project team at the consultation events.</p>

5.5.4 All consultation documents can be downloaded free of charge from the Scheme website from 30 May 2023 (tillbridgesolar.com/documents-library), with hard copy documents also available at the consultation events.

5.5.5 We will publicise as part of our statutory notices a service for requesting individual hard copies of technical documents, such as the PEI Report, and the process and charge for supplying these. A USB containing all Scheme documentation can be requested free of charge from the community relations team. USBs will be limited to one per household.

5.5.6 In the event of changing Government guidelines due to COVID-19, or other unforeseen circumstances meaning the consultation events must be cancelled, or the display of materials prevented, the Applicant will inform people as early as possible of the cancellation or expected change via the project website and electronic communication with key stakeholders.

5.5.7 In the event of face-to-face consultation events being cancelled, replacement online events will be organised, which will provide the same information as presented at the in-person events.

5.6 Promoting the consultation

5.6.1 We will use a variety of methods to make people aware of the Scheme and advertise the statutory consultation. These methods are outlined in **Table 5.2**.

Table 5.2: Methods for promoting the statutory consultation for Tillbridge Solar

Method	Detail
Consultation leaflet	Consultation leaflets will be posted to all homes and businesses in the PCZ at the start of the statutory consultation period. The leaflet will also be issued to wider consultees by email, including the non-statutory consultees listed in Appendix A .
Press releases	<p>To promote awareness of the Scheme and the consultation both within and beyond the PCZ we will publish a press release at the start of the consultation. This will be sent to the following local and regional media outlets:</p> <ul style="list-style-type: none"> • BBC Look North • BBC Radio Lincolnshire • BBC Radio Nottingham • BBC East Midlands • BBC Look North (Yorkshire) • ITV Calendar • Notts TV • Retford Times • The Gainsborough Standard • The Grantham Journal • The Lincolnite • Lincolnshire Echo • Lincolnshire Free Press • Lincolnshire in Focus • Lincolnshire Life • Lincolnshire Live • Lincolnshire Reporter • Lincolnshire Today

	<ul style="list-style-type: none"> • Lincolnshire World • Lincs FM • Endeavour FM • Gravity FM • Siren Radio • Market Rasen Mail • Nottinghamshire in Focus • Nottinghamshire Live • Nottingham Local News • Nottingham Post
<p>Newspaper advertisements</p>	<p>Two rounds of newspaper advertisements will be undertaken – one before and one during the consultation. Advertisements will provide details of the consultation, where more information can be found, how to respond, and the dates of the engagement activities.</p> <p>Advertisements will be placed in both print and digital publications to ensure wider coverage within and beyond the core and wider consultation zones. The publications will include:</p> <ul style="list-style-type: none"> • Lincolnshire Echo • Retford Times • Lincolnshire Live • Gainsborough Standard • Market Rasen Mail • Lincolnshire World • The Lincolnite • Lincolnshire Life • Retford Life
<p>Stakeholder briefings</p>	<p>We will issue communications to key stakeholders, including local political representatives (Councillors and MPs) and local planning</p>

	<p>authority Members and Parish Council clerks representing wards, constituencies, and parishes within the consultation zone to provide information about the proposals we are consulting on and invite them to take part in the consultation.</p> <p>We will arrange briefings directly with relevant planning officers at Lincolnshire County Council, Nottinghamshire County Council, West Lindsey District Council and Bassetlaw District Council at convenient dates and times to accommodate the May 2023 local elections.</p> <p>We will also offer briefings and organise online webinars with these stakeholders to provide information about the consultation. We will consider invitations to, or requests for, meetings with other local groups or special interest organisations on a case-by-case basis.</p>
<p>Emails and letters</p>	<p>We will send either emails or hard copy letters about the consultation and how to get involved to the following:</p> <ul style="list-style-type: none"> • host constituency and neighbouring constituency area MPs; • elected representatives at West Lindsey District Council, Bassetlaw District Council, Nottinghamshire County Council and Lincolnshire County Council; • host parish councils; • neighbouring local authorities; • neighbouring parish councils; and • local interest groups, such as community and environmental groups. <p>Formal notifications will be issued to stakeholders as required in accordance with section 42 of the Act.</p>
<p>Statutory notices</p>	<p>Statutory notices to publicise the consultation in accordance with section 48 of the Act will be published once in a national newspaper (The Guardian) and the London Gazette and twice (across two successive weeks) in local circulating papers (Lincolnshire Echo, Retford Times and Gainsborough Standard). The publication schedule is provided in Table 1.1.</p>

Statement of Community Consultation (SoCC)	This SoCC document will be made available online as part of the consultation and in hard copy at the consultation events. Copies will also be available for inspection only (and not to take away) at the local information points listed above.
Information posters	<p>Posters including details of the consultation, how to access Scheme information, and how to get involved, will be displayed at well-used public locations within the PCZ or locations in the immediate vicinity of the PCA, including libraries, shops and civic buildings. These will be hosted in agreement with relevant groups and venues, including where consultation events will take place.</p> <p>Information posters will also be sent to all host and neighbouring parish councils to help raise awareness of the consultation. Parish Councils will be encouraged to post details of the consultation on their social media channels.</p>
Social media	<p>We will carry out social media advertising via Facebook targeted at postcodes within the PCZ.</p> <p>Digital versions of consultation materials will be sent directly to key stakeholders to enable them to advertise and promote the consultation through their own online channels, including their websites, forums and social media channels.</p> <p>We will also contact groups and stakeholders, such as local planning authorities, to encourage them to share information on social media</p>

5.7 Wider engagement

- 5.7.1 Ongoing engagement with stakeholders will be undertaken ahead of the launch of the statutory consultation, including local authorities, MPs, the Environment Agency, Natural England, and Historic England (where possible) and with local interest groups, residents, and landowners who get in touch.
- 5.7.2 Local businesses and representatives of business groups with registered addresses within the PCZ will be sent a consultation leaflet at the start of the consultation period, inviting them to attend one of our consultation events.
- 5.7.3 Businesses identified as ‘near neighbours’ (i.e. within 50 metres of the Principal Site), will also be sent letters for the start of the consultation, offering an opportunity for an individual meeting.

5.8 Engagement with seldom heard groups

5.8.1 We are committed to ensuring that our consultation is accessible and inclusive for all stakeholders, includes groups and individuals that may find it harder to get involved in consultation and/or need additional support to access materials.

5.8.2 Consultation methods used to engage with these groups are set out below. We will continue to liaise with local groups representing seldom heard organisations to ensure accessibility to the consultation and that materials can be made available in the appropriate format.

- Providing details about how information on the Scheme can be accessed, including online and hard copy.
- Providing materials in alternative formats, including dementia friendly, Braille and large print (upon request).
- Assisting with providing feedback where possible, including via the communications lines and at face-to-face consultation events.

5.9 Information channels

5.9.1 The following enquiry channels will continue to be available throughout the consultation for members of the community and other stakeholders to get in touch with the project team, ask questions, request further information or request printed copies of consultation materials and documents. These channels are provided in **Table 5.3**. These communication channels will continue to be active throughout the pre-application period.

Table 5.3: Information channels for Tillbridge Solar

Method	Contact details	Hours of operation
Online	Website enquiries available via www.tillbridgesolar.com	Enquiries can be submitted 24 hours a day. We will aim to issue a response within five working days of receipt.
Telephone	0800 046 9643	9am–5:30pm weekdays (with an answerphone facility to take messages outside these hours).
Email	info@tillbridgesolar.com	People can email 24 hours a day, with emails being monitored between 9am and 5:30pm weekdays. We will aim to issue a responses within five working days of receipt.

Post	FREEPOST TILLBRIDGE SOLAR (please note that you do not need a stamp)	Should enquiries received via post require a response, this will be issued within five working days of receipt. Urgent enquiries should be directed to the Scheme's email address.
------	---	--

Section 6: Responding to the consultation

6.1 How to respond to the consultation

6.1.1 Feedback to the consultation should be submitted in writing or online to the Scheme by **23:59** on **11 July 2023**. Responses received after that date may not be considered.

6.1.2 Consultation responses can be made in the following ways:

- Completing the feedback questionnaire online, which can be accessed via the Scheme website: tillbridgesolar.com/consultation
- Attending a consultation event and completing a printed feedback questionnaire, which can be handed to the project team in person, or taken a way and sent to use via freepost (using **FREEPOST TILLBRIDGE SOLAR**). Questionnaires can also be collected from one of our local information points or requested from the community relations team, as detailed in **Table 5.3**.
- Emailing info@tillbridgesolar.com
- Writing to us at **FREEPOST TILLBRIDGE SOLAR** (please note that no stamp is required)

6.2 How we will use consultation feedback

6.2.1 When our statutory consultation closes, we will have regard to all comments received. All feedback, including ongoing engagement with communities and stakeholders, is important to us and will help influence our designs for the Scheme.

6.2.2 Once we have reviewed and finalised our proposed application, we will produce a Consultation Report, which set out how the feedback from the pre-application consultation has shaped and influenced our proposed application.

6.2.3 This Consultation Report will be submitted to the SoS for the Department for the Department for Energy Security and Net Zero as part of the DCO application.

6.2.4 Any comments received could be made public, but no personal information will be published. Any personal data received as part of the Consultation will be stored and protected in accordance with the requirements of the General Data Protection Regulation. The privacy notice for those visiting the Scheme website is available at: tillbridgesolar.com

Section 7: Further consultation

7.1.1 If, following the statutory consultation, we consider it is necessary to undertake further targeted or supplementary consultation, this would be undertaken, so far as relevant and proportionate, in accordance with the principles and methods set out in this SoCC.

Section 8: Other solar DCO consultations in the area

8.1.1 We are aware there are a number of other proposed solar developments in the area and understand the need to ensure that communities in the area are aware of the other proposals, notably Low Carbon's plans for Gate Burton Energy Park and Island Green Power's plans for Cottam Solar and West Burton Solar. A map showing the location of the Scheme in relation to other solar developments is provided in [Appendix B – Solar DCO projects](#).

8.1.2 We have been and will continue to work constructively with these other developers to ensure:

- People are easily able to engage with our consultation processes and have opportunities to get involved, including ensuring that consultation periods are distinct and do not clash, where possible.
- All environmental effects are fully assessed, including any cumulative impacts.
- A common-sense approach to construction is taken in order to minimise disruption, including sharing infrastructure and construction timelines, where feasible.
- Shared infrastructure is used where possible, such as a cable route corridor.

8.1.3 We have been in conversation with Low Carbon and Island Green Power in regard to their Cottam and West Burton Solar Projects and Gate Burton Energy Park, respectively. These conversations, which have been held on a regular basis, have taken place with the purpose of understanding the progress of each respective project, how they interact with each other and how information and proposals can be shared. This includes work to support the refinement of the Scheme's cable route corridor, with view to sharing a common route, where possible.

8.1.4 At our statutory consultation events, we will indicate how the Scheme relates geographically to the other developments, with information up to date and correct at the time of finalisation and publication of the Scheme's PEI Report (May 2023).

Section 9: Contact details

- 9.1.1 Please don't hesitate to get in touch if you would like to find out more information about the Scheme. You can get in touch with members of our community relations team using any of the communications lines listed in **Table 5.3**.
- 9.1.2 Should you require any documents in large print, audio or Braille then please contact us using the details provided. All graphs and maps this document are for illustrative purposes only.

Appendix A – Consultee lists

Non-statutory consultees

Environmental and Energy groups

Natural England
Historic England
The Environment Agency
Council for the Protection of Rural England (CPRE)
The Council for British Archaeology
Lincoln Archaeology Group
RSPB
Woodland Trust
The British Greater Lincolnshire Nature Partnership Society
Society for Lincolnshire History & Archaeology
National Trust
Lincolnshire Wildlife Trust
Nottinghamshire Wildlife Trust
Lincolnshire Rivers Trust
North Lincolnshire Local Access Forum
Scunthorpe & Gainsborough Water Management Board
Upper Witham Internal Drainage Board
Nottinghamshire Local Access Forum
UK Alternative Energy
Lincolnshire Energy Centre
Lincolnshire Bird Club

Sports and Leisure groups

Walking in England
Active Lincolnshire
Ramblers - Lincolnshire Area
Lincs Inspire
Lincoln & District Angling Association (LDAA)
Sport England
Cycling UK Lincolnshire
Gainsborough Aegir Cycling Club

Spalding Cycling Club
Cycling UK Nottinghamshire
Lincolnshire Walking Group
Sustrans (East Midlands)
The Ramblers (Nottinghamshire Representative)
Nottinghamshire Footpaths Preservation Society
British Horse Society (Nottinghamshire and Lincolnshire representative)
The Ramblers Association
Lincolnshire Gliding Club
North Lincs Riding Club

Economic and Business groups

Lincolnshire Chamber of Commerce
Greater Lincolnshire Local Enterprise Partnership
Invest North East Lincolnshire
Business Lincolnshire
Confederation of British Industry
Lincoln Business Improvement Group
Team Lincolnshire

Local groups and 'near neighbours'

Lincolnshire Conservation Group
Willingham by Stow Horticultural Society
Churches Together in All Lincolnshire
Springline Parish (group of churches)
St Andrew's Church,
Fillingham Church
'Glentworth St Michael's Church
'St Chad's Church Harpswell
RAF Ingham Heritage Centre
RAF Scampton
Lincoln Aero Club
Millhaven Canine Rehabilitation
Lincolnshire Rescue Kennels
Lincoln Golf Club

Charitable organisations and religious groups

The Victorian Society
 Salvation Army
 Christians Against Poverty
 CARE
 Islamic Association of Lincoln
 Sleaford Islamic Centre
 East Midlands Synod
 Lincolnshire Jewish Community
 The Jack Brunton Charitable Trust
 The Principle Trust Children's Charity
 Lincs Inspire
 SENSE Lincolnshire
 LTC – Beat It! Social Isolation
 Lincolnshire Polish Society
 Lincolnshire Pamoja
 Nottingham Equal
 Muslim Council of Britain

Local business groups/wider representation

Country Land and Business Association
 National Farmers Union
 Federation of Small Businesses
 Lincolnshire Rural Support Network
 Rural Business Network
 Lincs Rural

Seldom heard groups

Age UK Lincolnshire and South Lincolnshire
 Age UK Nottingham and Nottinghamshire
 Lincolnshire Traveller Initiative
 Lincolnshire Deaf Association
 Nottingham Deaf Society
 Lincolnshire Autistic Society
 Autistic Nottingham
 The WI Nottinghamshire Federation

Disability Nottinghamshire

Disability Lincs

Lincolnshire Gypsy Liaison Group

Friends, Families & Travellers

Lincoln and Lindsey Blind Society

Lincolnshire Pamoja

National Federation of Gypsy Liaison Groups

Lincolnshire Travellers Initiative

Youth and support groups

Lincolnshire Youth and Community Development

Lincolnshire Young Farmers

Lincoln and West Lindsey Lincolnshire Young Farmers

Nottinghamshire Federation of Young Farmers Clubs

Lincolnshire Council For Voluntary Youth Services

Carers First Lincolnshire

Healthwatch Lincolnshire

LEAP - Housing Support Service

Lincolnshire Food Partnership

Lincolnshire Housing Partnership

Gainsborough Local Access Programme

Young Lincolnshire

Lincolnshire Youth Council

Lincoln and West Lindsey Youth Workers Youth and Community Development

Barnardos

Scouts Nottinghamshire

Scouts Lincolnshire

Girlguiding Lincolnshire North

Girlguiding Nottinghamshire

Schools/education

Ingham Primary School

Hemswell Cliff Primary School

Mayflower Specialist School Academy Trust

The Marton Academy

May 2023

Sturton by Stow Primary School
The Gainsborough Academy Lincolnshire
Gainsborough College (UK)
Lincoln College
Lincoln University Technical College
University of Lincoln

Appendix B – Solar DCO projects

This map shows the location of the scheme in relation to other solar DCO projects in the area.

